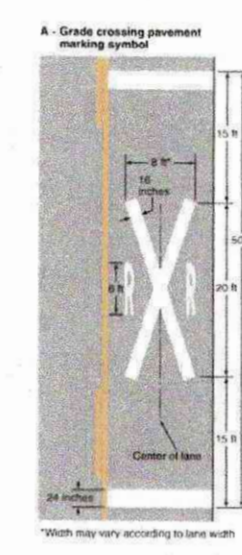
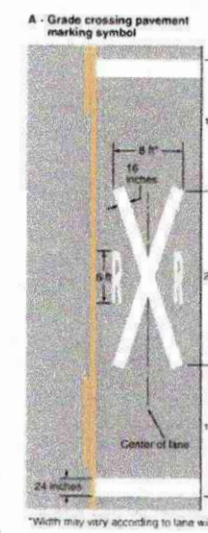
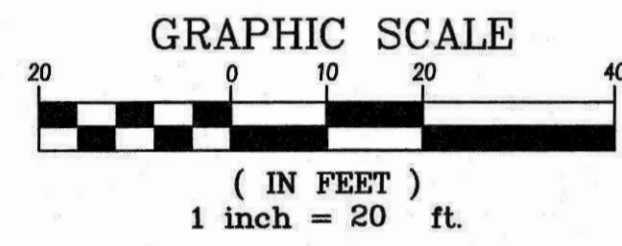


OAKVIEW TACOMA RAIL EASEMENT

PORTIONS THE NORTHWEST QUARTER, NORTHEAST QUARTER, SOUTHEAST QUARTER AND THE SOUTHWEST QUARTER OF SECTION 03, TOWNSHIP 17 NORTH, RANGE 02 EAST, W.M.
PIERCE COUNTY, WASHINGTON

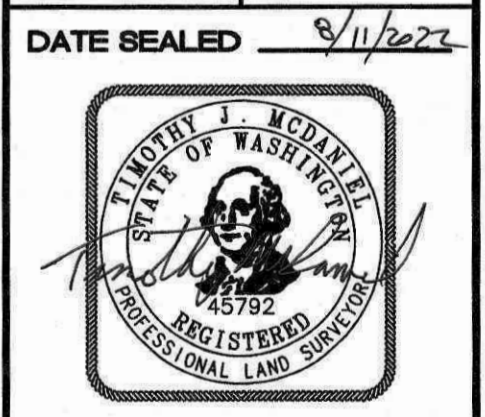


REV NO	REVISION DESCRIPTION	DATE BY

Apex Engineering
 2601 South 35th Street, Suite 200
 Tacoma, Washington 98409-7479
 (253) 473-4484 FAX: (253) 473-0589

TITLE
 OAKVIEW
 TACOMA RAIL EASEMENT

CLIENT ROY MEADOWS DEVELOPMENT GROUP, LLC
 1000 2ND AVE, SUITE 3200
 SEATTLE, WA 98104-1074
 (206) 829-9847



DATE SEALED 8/11/2023

PROJECT MANAGER TJM

DESIGN _____

DRAWN GAW

CHECKED TJM

SEC 03 T 07N R 02E

FILE NO 34816-030.DWG

DATE 10/16/2019

SCALE 1"=500'

SHEET 1 OF 1

FILE NO 34816

© APEX ENGINEERING, LLC 2022

I:\34816\Planning\Exhibits and Sketches\09-22-21\34816 PRELIMINARY PLAT-09-22-21.dwg