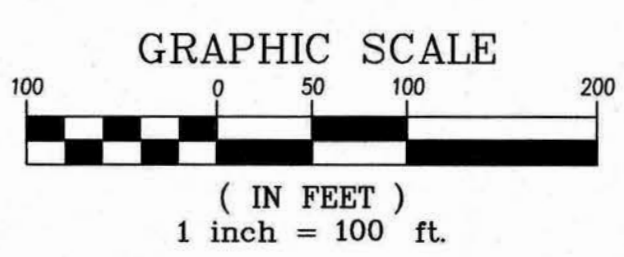
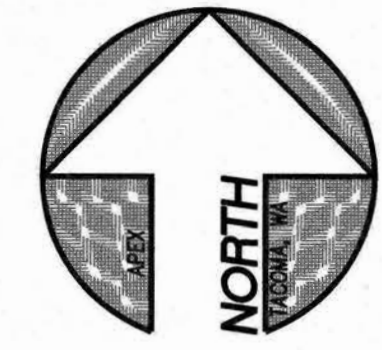
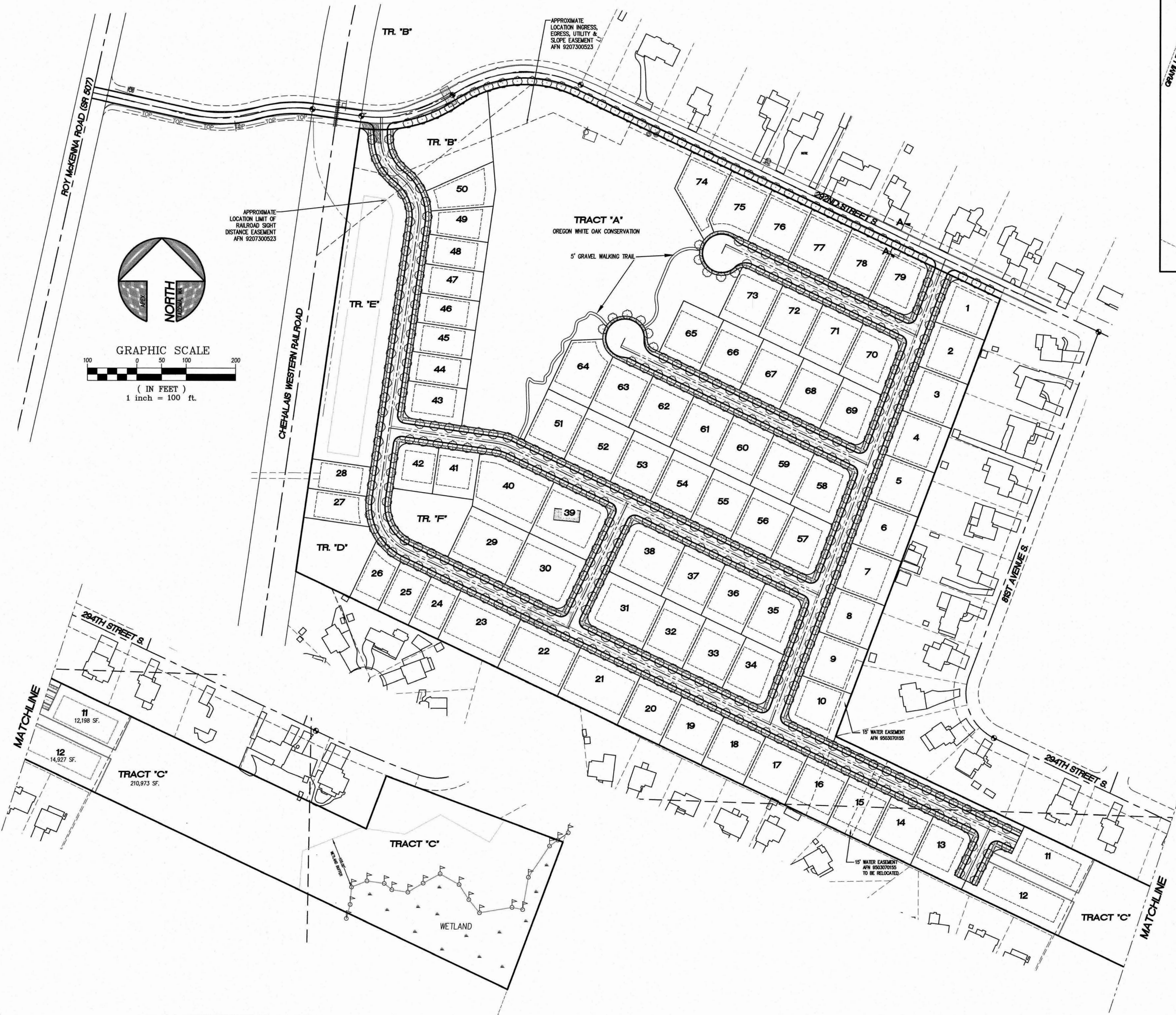


# OAKVIEW STREET TREE EXHIBIT

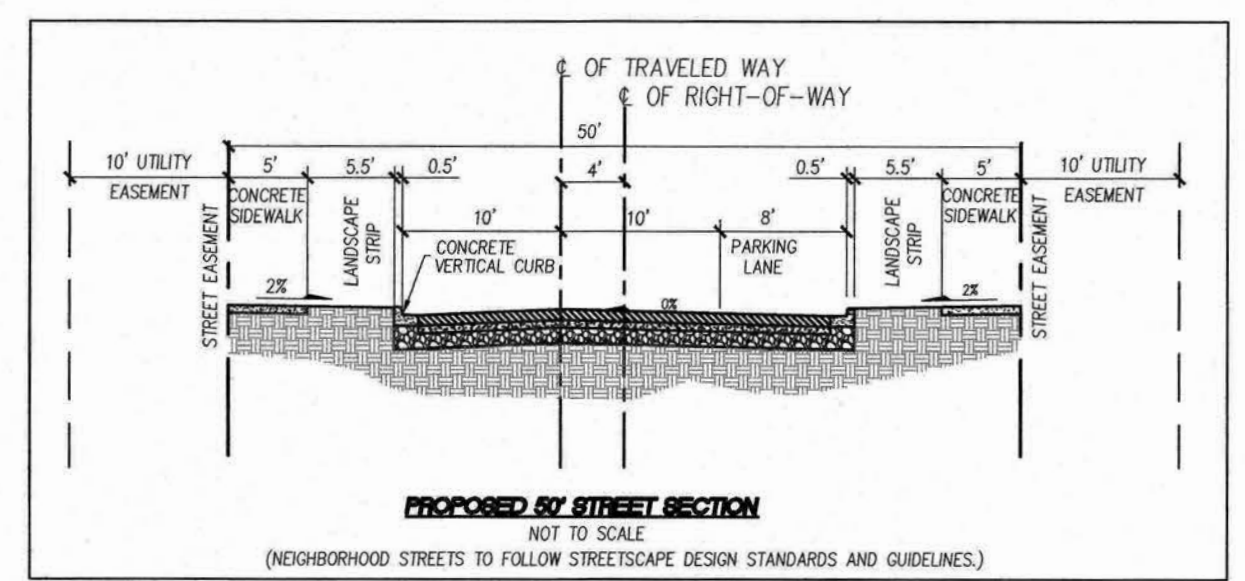
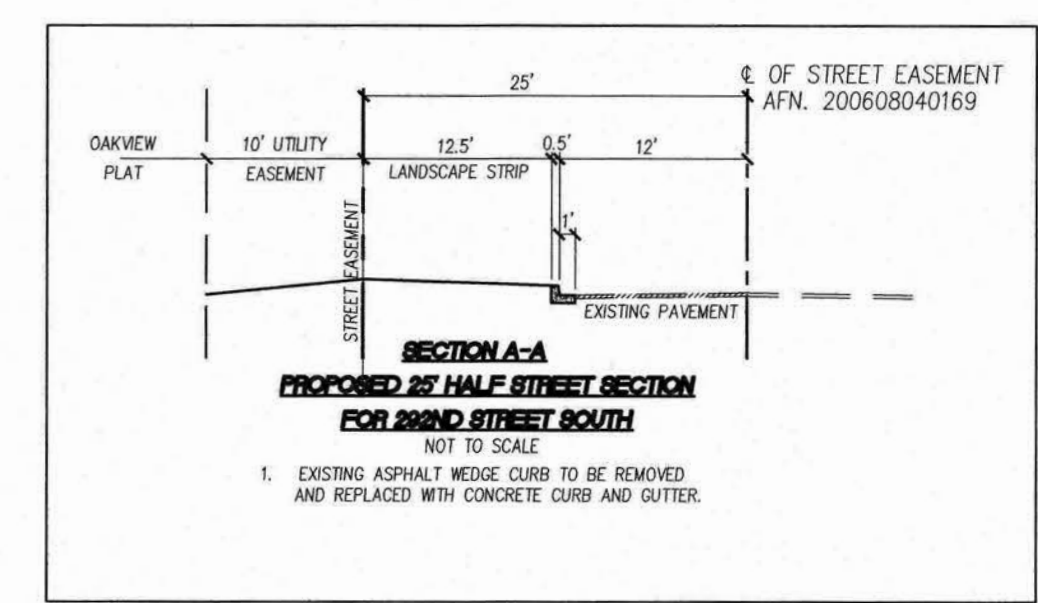
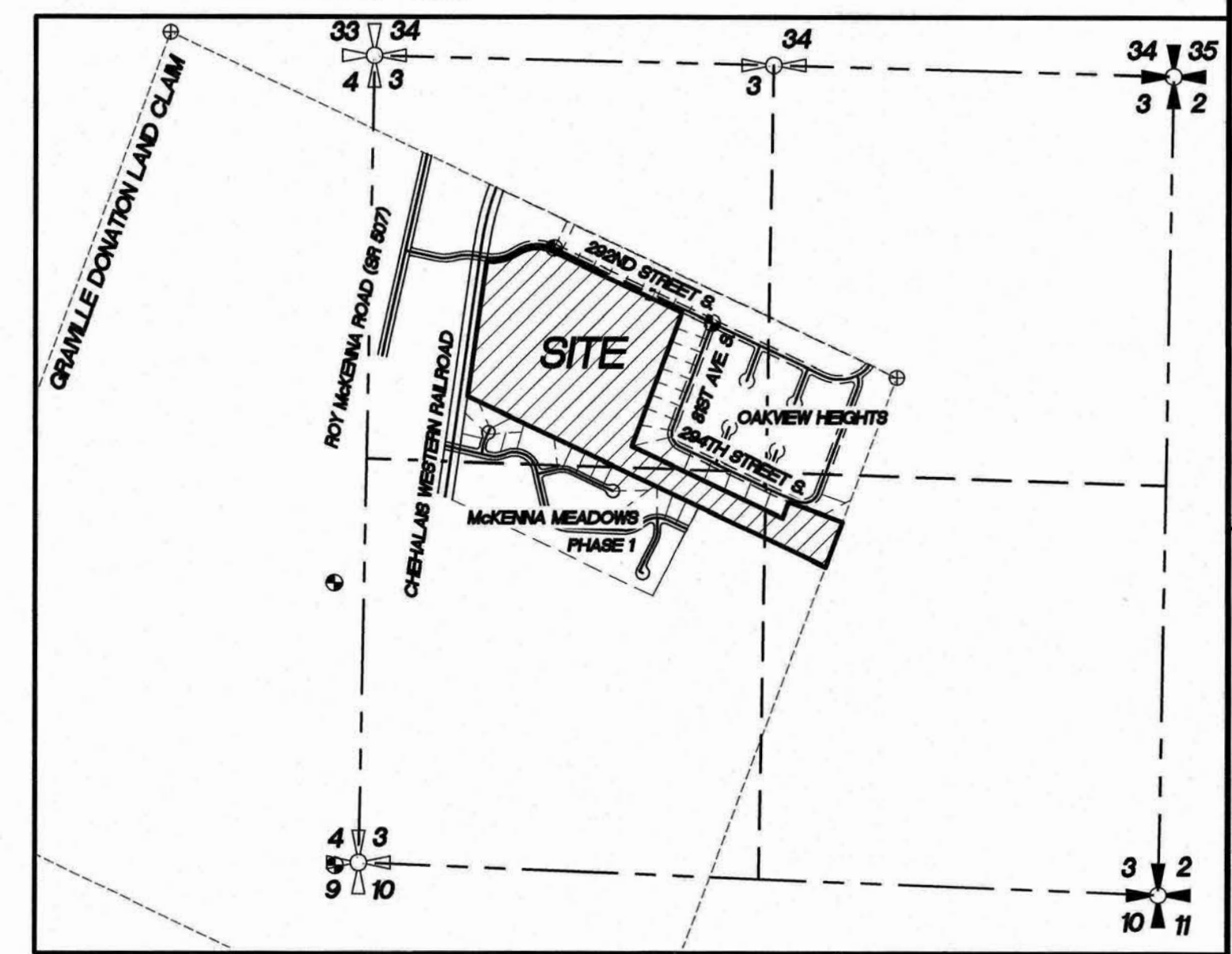
PORTIONS THE NORTHWEST QUARTER, NORTHEAST QUARTER, SOUTHEAST QUARTER AND THE SOUTHWEST QUARTER OF SECTION 03, TOWNSHIP 17 NORTH, RANGE 02 EAST, W.M.  
CITY OF ROY, PIERCE COUNTY, WASHINGTON



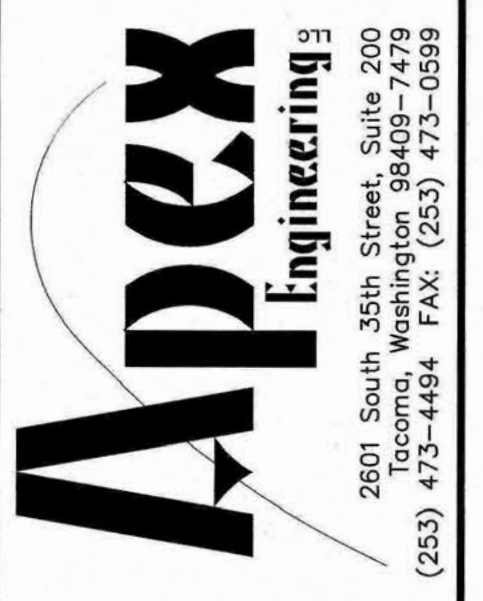
APPROXIMATE LOCATION LIMIT OF RAILROAD SIGHT DISTANCE EASEMENT AFN 9207300523

APPROXIMATE LOCATION INGRESS, EGRESS, UTILITY & SLOPE EASEMENT AFN 9207300523

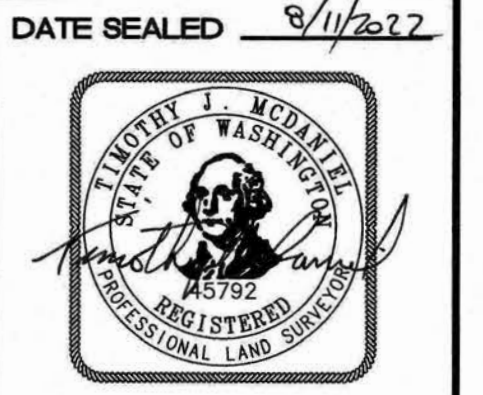
**NOTE:**  
1. STREET TREES WILL COMPLY WITH CITY OF ROY DESIGN STANDARDS AND GUIDELINES 3.7.2 AND TREES WILL BE FROM TABLE 3.1 APPROVED STREET TREES.  
2. NUMBER OF ON-SITE TREES = 341  
NUMBER OF OFF-SITE TREES = 42  
TOTAL STREET TREES = 383



REV NO	REVISION DESCRIPTION	DATE	BY



**OAKVIEW STREET TREE EXHIBIT**  
**CLIENT ROY MEADOWS DEVELOPMENT GROUP, LLC**  
1000 2ND AVE, SUITE 3200  
SEATTLE, WA 98104-1074  
(206) 829-9947



**PROJECT MANAGER**  
TRES KIRKEBO  
**DESIGN** KRS  
**DRAWN** KRS  
**CHECKED** TJM  
SEC 03 T 17N R 02E  
FILE NO 34816-CSD.DWG  
DATE 05-11-22  
SCALE 1"=100'  
**SHEET 1 OF 1**  
FILE NO 34816  
© APEX ENGINEERING LLC 2022

T:\34816\Planning\Exhibits and Sketches\03-04-22\34816 PRELIMINARY PLAT-03-04-22.dwg