

CODE SUMMARY TABLE

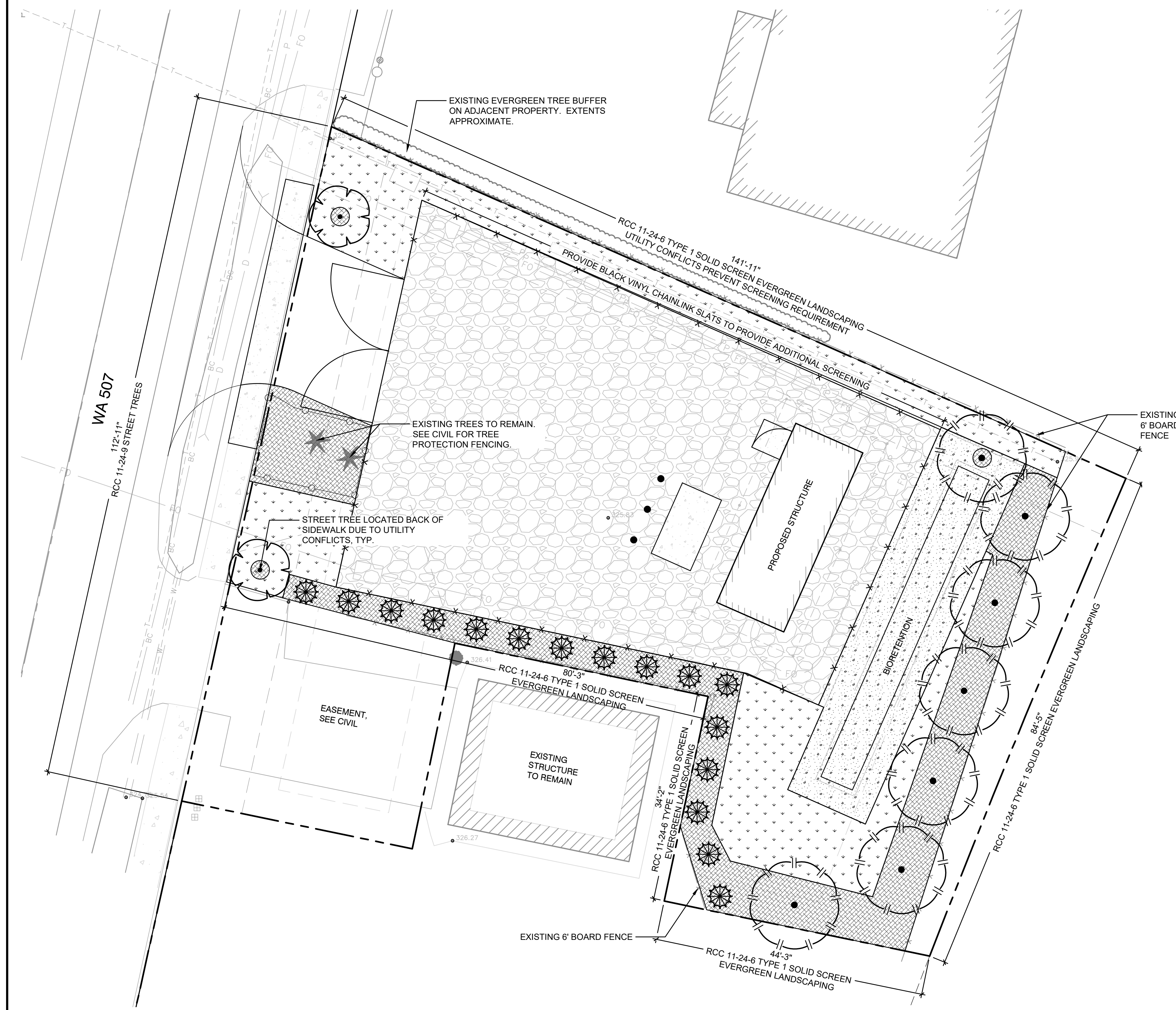
ROY MUNICIPAL CODE	CALCULATIONS	REQUIRED	PROVIDED
RCC 11-24-3 (E) : AT LEAST 25% NATIVE PNW VEGETATION	SEE PLANTING SCHEDULE	25%	26%
RCC 11-24-6 (A) : TYPE 1, SOLID SCREEN EVERGREEN LANDSCAPING REQUIRED BETWEEN INCOMPATIBLE LAND USES	SEE PLANTING PLAN		
RCC 11-24-9 : STREET TREE	SEE PLANTING PLAN		
RCC 11-24-10: TREE RETENTION	(3) EXISTING HEALTHY TREE >24 DBH + (1) EXISTING HEALTHY TREE 12-23 DBH TO BE REMOVED = 22 REPLACEMENT TREES	22 EVERGREEN TREES	23 EVERGREEN TREES

LEGEND

	PROPERTY LINE
	EXISTING FENCE TO REMAIN, SEE C2.0 TESC AND DEMOLITION PLAN
	EXISTING TREE TO REMAIN, SEE C2.0 TESC AND DEMOLITION PLAN
	PROPOSED PRIVACY SLAT FENCE, SEE DETAIL 3/C4.1
	TREE PROTECTION FENCING, SEE CIVIL
	GRAVEL SURFACING, SEE C4.0 UTILITIES, PAVING AND HORIZONTAL CONTROL PLAN
	CEMENT CONCRETE, SEE C4.0 UTILITIES, PAVING AND HORIZONTAL CONTROL PLAN
	MULCH, SEE NOTES

GENERAL NOTES

- SEE SHEET C2.0 FOR EXISTING TREES TO BE REMOVED. SEE THIS SHEET L1.0 AND L1.1 FOR TREE REPLACEMENT.
- FENCING. DUE TO UTILITY CONSTRAINTS ALONG THE NORTH PROPERTY LINE, PROVIDE BLACK VINYL CHAINLINK SLATS ALONG NORTH FENCE LINE TO PROVIDE ADDITIONAL VISUAL SCREEN TO NORTH PROPERTY.
- SOIL AMENDMENTS. LANDSCAPE AREAS TO BE GRUBBED. NATIVE SOIL TO BE TILLED TO A DEPTH OF 6". FULLY INCORPORATE 2" COMPOST PRIOR TO SEEDING. SOIL PLACEMENT SHALL CONFORM TO ALL CITY OF ROY CODE REQUIREMENTS.
- TOPSOIL. TOPSOIL TO BE CEDAR GROVE COMPOST 3-WAY MIX OR APPROVED EQUAL.
- MULCH. PROVIDE 3" DEPTH ARBORIST WOOD CHIPS.
- IRRIGATION. INSTALL TEMPORARY AUTOMATIC UNDERGROUND IRRIGATION SYSTEM AS SPECIFIED IN ALL NEW AND RENOVATED LANDSCAPE AREAS. IRRIGATION TO COMPLY WITH RCC 11-24-12.
- PROVIDE TEMPORARY IRRIGATION FOR A MINIMUM OF TWO GROWING SEASONS.
- PLANTING SHALL CONFORM TO ALL CITY OF ROY CODE REQUIREMENTS, INCLUDING PRESERVATION OF ADEQUATE INTERSECTION SIGHT DISTANCE LINES/ TRIANGULAR AREAS.
- CONTRACTOR SHALL VERIFY ON-SITE CONDITIONS PRIOR TO BIDDING AND CONSTRUCTION.
- THE CONTRACTOR AND OWNER ARE RESPONSIBLE FOR READING THE PLANS, SPECIFICATIONS AND NOTES.
- THE CONTRACTOR SHALL VERIFY ALL PLANT MATERIAL QUANTITIES PRIOR TO INSTALLATION. ANY PLANT MATERIAL QUANTITIES LISTED ARE FOR THE CONVENIENCE OF THE CONTRACTOR. ACTUAL NUMBER OF SYMBOLS SHALL HAVE PRIORITY OVER QUANTITY DESIGNATED. THE CONTRACTOR SHALL BE RESPONSIBLE FOR COUNTING THE TOTAL NUMBER OF PLANTS INDICATED ON THE PLANS AND ESTIMATING GROUNDCOVER QUANTITIES.
- THE CONTRACTOR SHALL FURNISH AND PAY FOR ALL CONTAINER OR FIELD GROWN TREES, SHRUBS AND GROUNDCOVERS, INCLUDING SEEDED AND SODDED TURF, HYDROMULCHES AND FLATTED GROUNDCOVERS. THE CONTRACTOR SHALL ALSO BE RESPONSIBLE AND PAY FOR: PLANTING OF ALL PLANT MATERIALS; THE SPECIFIED GUARANTEE OF ALL PLANT MATERIALS; THE STAKING AND GUYING OF TREES AND THE CONTINUOUS PROTECTION OF ALL PLANT MATERIALS UPON THEIR ARRIVAL AT THE SITE.



Project Title:
MOX SHELTER ROY

Client:
MOX NETWORK, LLC

2040 EAST MARIPOSA AVENUE
EL SEGUNDO, CA 90245
LARS NYQUIST

Project No.
2220861.40

Issue Set & Date:
PERMIT SET
MARCH 2023



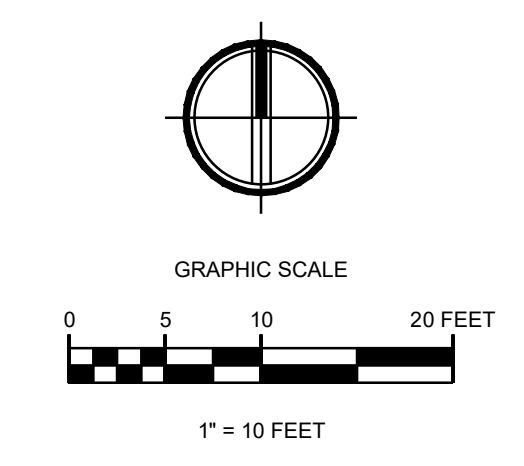
NOTICE
ALTERATION OF THIS DOCUMENT SHALL INVALIDATE THE PROFESSIONAL SEAL AND SIGNATURE. REPRODUCTION OF THIS DOCUMENT DOES NOT DEROGATE FROM RESERVED OWNERS RIGHTS IN IT. THIS DOCUMENT IS FOR USE ONLY FOR THE PROJECT ENTITLED IN THE TITLE BLOCK AND IS NOT TO BE USED FOR OTHER, SIMILAR, OR ADDITION TO THAT PROJECT OR FOR ANY OTHER PROJECT.

Revisions:

Sheet Title:
PLANTING PLAN

Designed by: EH Drawn by: EH Checked by: SSS

Sheet No.
L1.0
1 of 2 Sheets

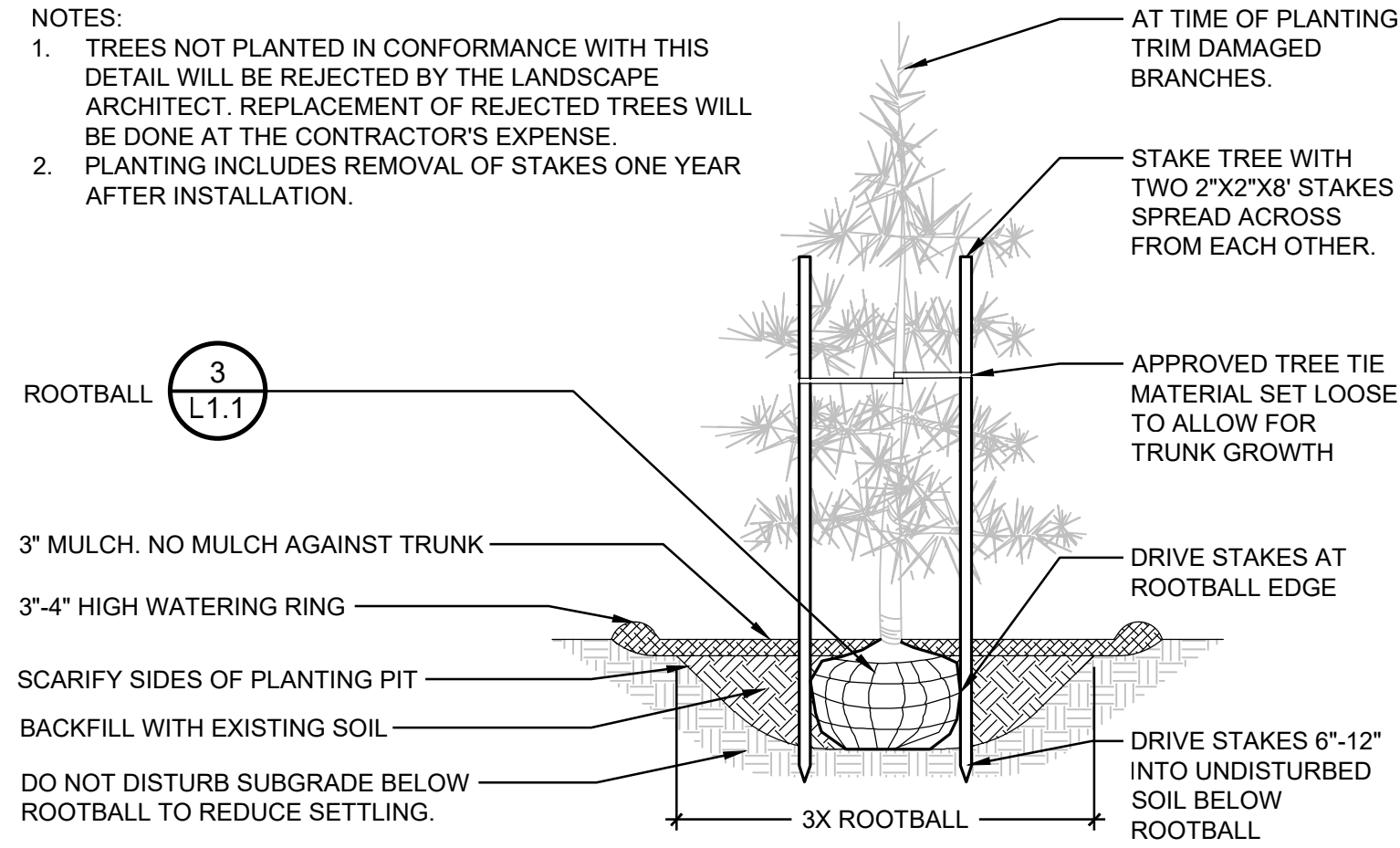


PLANT SCHEDULE

TREES	CODE	QTY	BOTANICAL NAME	COMMON NAME	PLANTING SIZE	CAL./HT.	DROUGHT TOLERANT	NATIVE	TYPE
	CD	7	CALOCEDRUS DECURRENS 40' MATURE HEIGHT	INCENSE CEDAR	CONT/B&B	6' MIN. HT.	YES	YES	EVERGREEN
	TM	16	JUNIPERUS SCOPULORUM 'SKYROCKET' 15' MATURE HEIGHT	SKYROCKET JUNIPER	CONT/B&B	6' MIN. HT.	YES	NO	EVERGREEN
	LM	2	LAGERSTROEMIA INDICA X FAURIEI 'MUSKOGEE' 20' MATURE HEIGHT	MUSKOGEE CRAPE MYRTLE	CONT/B&B	2" CAL	YES	NO	DECIDUOUS
GROUND COVERS	CODE	QTY	BOTANICAL NAME	COMMON NAME	PLANTING SIZE	DROUGHT TOLERANT	NATIVE	TYPE	
	CB	943 SF	COUNTRY GREEN	BIOSWALE SEED MIX	SEED	NO	NO		
	TH	1,826 SF	COUNTRY GREEN	SOD GEM TURF-TYPE TALL FESCUE	SEED	YES	NO		

NOTES:

- TREES NOT PLANTED IN CONFORMANCE WITH THIS DETAIL WILL BE REJECTED BY THE LANDSCAPE ARCHITECT. REPLACEMENT OF REJECTED TREES WILL BE DONE AT THE CONTRACTOR'S EXPENSE.
- PLANTING INCLUDES REMOVAL OF STAKES ONE YEAR AFTER INSTALLATION.

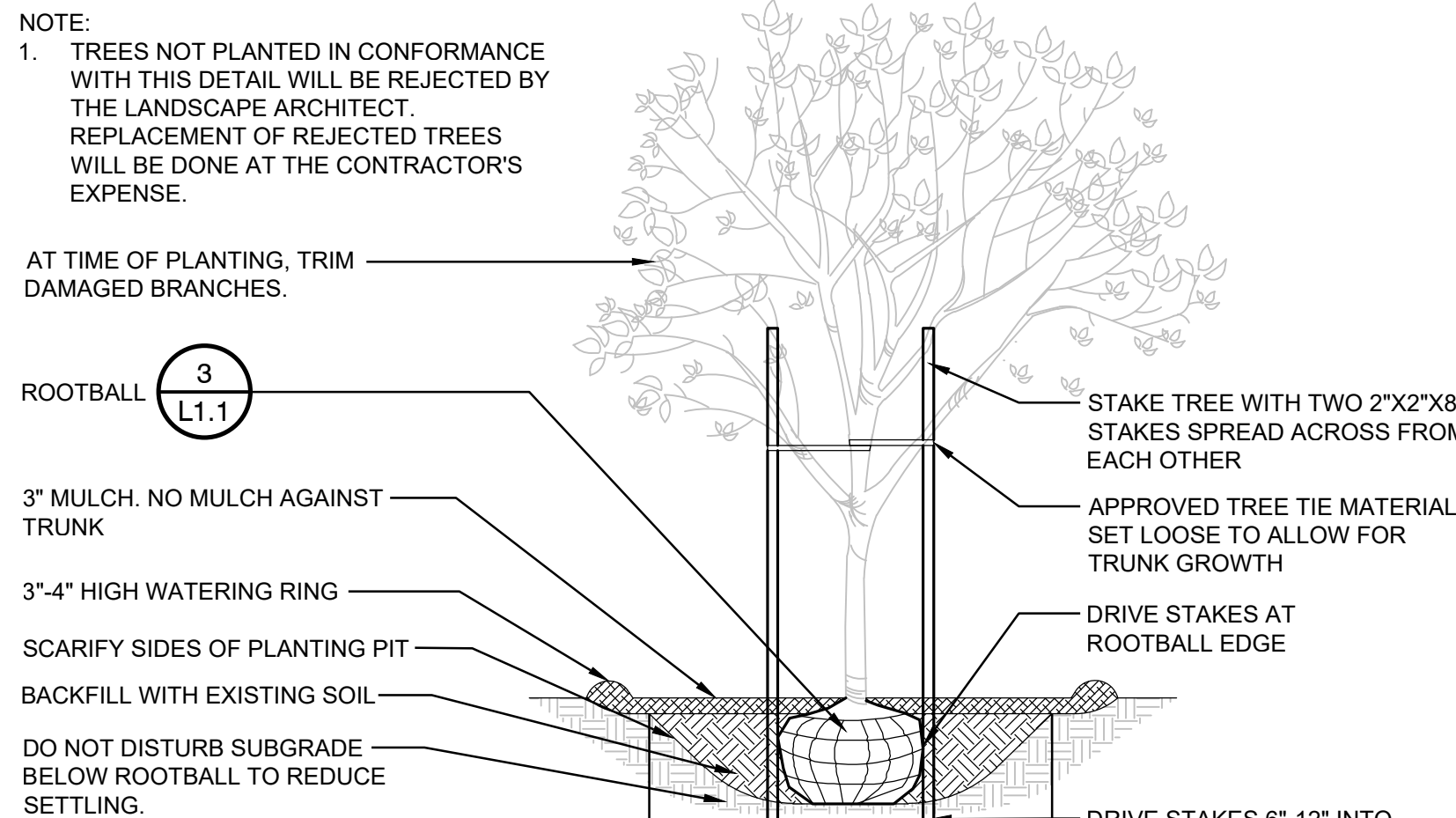


1 CONIFEROUS TREE PLANTING

3/8" = 1'-0"

NOTE:

- TREES NOT PLANTED IN CONFORMANCE WITH THIS DETAIL WILL BE REJECTED BY THE LANDSCAPE ARCHITECT. REPLACEMENT OF REJECTED TREES WILL BE DONE AT THE CONTRACTOR'S EXPENSE.

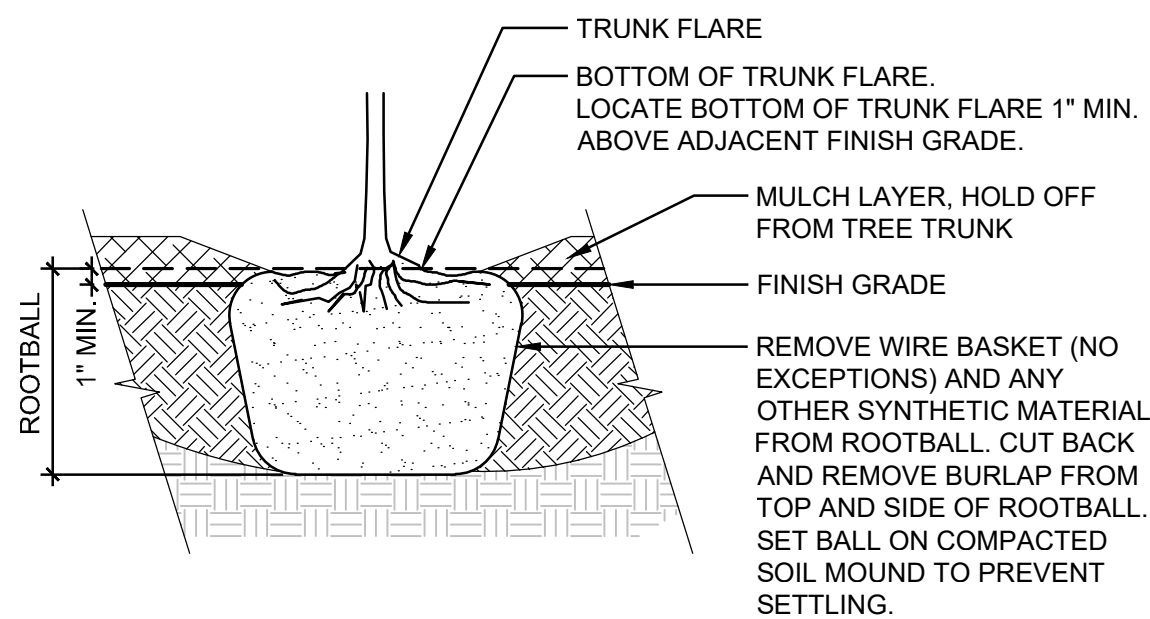


2 DECIDUOUS TREE PLANTING

3/8" = 1'-0"

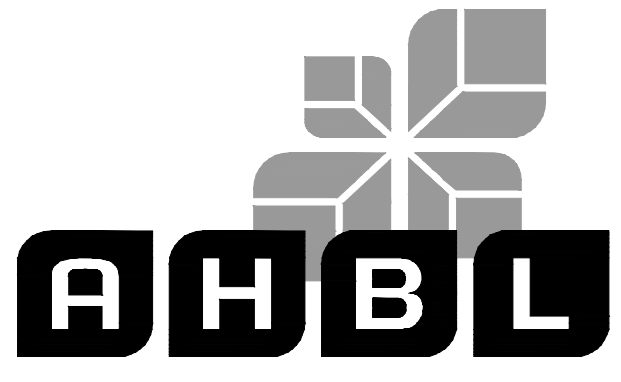
NOTES:

- TREES PLANTED TOO DEEP WITHOUT EXPOSING ROOT FLARE WILL BE REJECTED AND SHALL BE REMOVED AND REPLANTED AT PROPER DEPTH. REPLACEMENT OR REPLANTING OF REJECTED TREES WILL BE DONE AT THE CONTRACTOR'S EXPENSE.
- REMOVE EXCESS SOIL THAT MAY HAVE ACCUMULATED ABOVE THE TRUNK FLARE PRIOR TO DIGGING AT NURSERY. EXPOSE AND LOCATE TRUNK FLARE PRIOR TO PLANTING.
- PRUNE ANY GIRDLING OR ADVENTITIOUS ROOTS PRIOR TO BACKFILLING.



3 ROOTBALL

1" = 1'-0"



TACOMA • SEATTLE • SPOKANE • TRI-CITIES
2215 North 30th Street, Suite 300 Tacoma, WA 98403
253.383.2422 TEL 253.383.2572 FAX www.ahbl.com WEB

Project Title:
MOX SHELTER ROY

Client:
MOX NETWORK, LLC

2040 EAST MARIPOSA AVENUE
EL SEGUNDO, CA 90245
LARS NYQUIST

Project No.
2220861.40

Issue Set & Date:

PERMIT SET

MARCH 2023



NOTICE
ALTERATION OF THIS DOCUMENT SHALL INVALIDATE THE PROFESSIONAL SEAL AND SIGNATURE. REPRODUCTION OF THIS DOCUMENT DOES NOT CONSTITUTE A PROFESSIONAL SEAL OR SIGNATURE. THIS DOCUMENT IS FOR USE ONLY FOR THE PROJECT IDENTIFIED IN THE TITLE BLOCK AND IS NOT TO BE USED FOR OTHER PURPOSES, IN ADDITION TO THAT PROJECT OR FOR ANY OTHER PROJECT.

- △
- △
- △
- △

Revisions:

Sheet Title:
PLANT SCHEDULE AND DETAILS

Designed by: EH Drawn by: EH Checked by: SSS

Sheet No.

L1.1

2 of 2 Sheets